

# What's New in BG-Map 2012

---

## Reorganized Menu Structure

The menu structure in both the BG-Map and AutoCAD screens has been reorganized to make it more consistent between screens and more in keeping with standard Windows menus.

These menus are now identical in both the BG-Map and AutoCAD windows:

- ❖ **File**
- ❖ **Generate**
- ❖ **Map**
- ❖ **Print**
- ❖ **Tools** (Previously called Setup)
- ❖ **Utilities**
- ❖ **Field Data**

A new **Edit** menu has been added to the BG-Map window to provide standard functions like Cut and Paste.

The former Setup menu has been renamed **Tools**, and several of its functions have been grouped into an **Options** sub-menu within the Tools menu.

Fix Accession Number in the Field Data Menu has been renamed **Edit Accession Numbers**.

The former Utilities menu in the AutoCAD window has been renamed **Map Utilities** to distinguish it from the Utilities menu that is in common with the BG-Map window.

The former Plants/Objects Menu in the AutoCAD window has been renamed **Plants/Objects on Map**.

The former Base Map menu in the AutoCAD window has been renamed **Edit Base Map**, and the functions in the former Layers menu have been grouped into a **Layers** sub-menu within the Edit Basemap menu.

## Soil Types: New Feature

You can now assign a Soil Type to any Region Bounded Defined View. This Soil Type will then be associated with all plants mapped within this Defined View to indicate the type of soil the plants are growing in. Plant soil types can then be searched with the Search Tool and can be included in Plant List Formats for use in reports. You can create Soil Types by clicking **Tools/Create Soil Types** or by clicking the Create New button in the **Create Defined Views** window. In this

window, you can also display the boundaries and Soil Types of all Defined Views by clicking “Show All With Soil Types.”

## Improved Egbert the BG-Map Expert

The “Egbert the BG-Map Expert” help utility has improved text layout, graphics, links between help screens and links to the BG-Map Users Manual and on-line Users Forum. You can access Egbert by clicking **Help/Ask Egbert**. Or click this icon. Give Egbert a try.



## Create New *BG-BASE* Plant Records From Within BG-Map: New Feature

You can now create new Accession and Plants records directly within BG-Map. To access this feature, click **Map/Create BG-BASE Plant**. Before you can use this feature, you must enable the BG-Map user to access it and set the format for new accession number to be created.

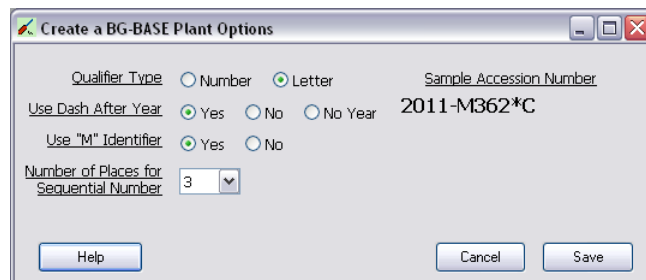
### Enabling a BG-Map User to Access This Feature

Go to the password setup screen, edit a user, and add this code after the user's name: **/PL**

This gives the user permission to create new BG-BASE accession and plant records from within BG-Map. For more on how to create and edit passwords, see “Starting BG-Map” in the BG-Map Users Manual, which can be accessed by clicking **Help/BG-Map Users Manual**.

### Setting the Format for Creating New Accession Numbers

Click **Tools/Options/Create BG-BASE Plant Options**.



This window allows you to set options that control how new accession numbers will be formatted. Each new accession number will consist of the year followed by a sequential number and a qualifier. The sample accession number shows how a typical accession number will be formatted as these options are changed. For details, click the Help button.

## Creating New Accessions and Plants

Click **Map/Create BG-BASE Plant**. This window allows you to create a new *BG-BASE* Plant record and, if needed, an associated *BG-BASE* Accession record.

There are three Options:

- ❖ Create a New Accession and Plant
- ❖ Clone This Plant
- ❖ Create a New Plant from an Existing Accession

For details, click the “Help” button.

## **Changes to Export Functions for Plant Lists That Accompany Maps**

The Tab-Delimited export format has been eliminated. The three remaining formats, Text, CSV (comma-delimited), and HTML all can be opened and viewed directly from the “Generate” window by clicking “View/Print.”

### Export Options

#### **Plain Text (.txt)**

After generating the map, click "View/Print" to view or print the list. You can insert the exported text file into other Windows applications such as word processors, email programs, etc.

When inserting exported plant list text into a document, make certain that you

use a non-proportional font, such as Courier so that the columns will line up.

### **Comma Separated Values (.csv)**

After generating the map, click "Open in Excel" to open the plant list in Microsoft Excel® for further editing or printing.

### **Web Format (.html)**

After generating the map, click "View/Print" to view or to open the plant list in Microsoft Excel® for further editing or printing.

## **Show Quad Labels: New Feature When Generating Maps**

A new check box, "Show Quadrant Labels", has been added to the window used to generate maps. Check this box to display the names of each quadrant within the generated area. Quadrant labels are displayed in the corners and center of each quadrant that contains generated plants.

## **"Where Am I" Icon In Generate Menu: New Feature**

As an aid to generating Quadrant or Defined View maps, the "Where Am I" icon now appears in the "Generate" window. Click this icon, and then click a spot on the map to determine which Quadrant or Defined view to generate.



## **Plant Lists Can Be Directly Opened in Excel: New Feature**

When creating plant lists in the **Print/Plant Lists** menu, the report viewer now provides the option of opening the list in Excel without having to open Excel separately.

## **Dead Plants Can Be Included in Plant Lists: New Feature**

Two types of plant lists now provide the option of including dead plants:

- ❖ Mapped and Unmapped Plants – **Print/Plant Lists/Mapped and Unmapped Plants – Include Dead Optional**
- ❖ Plants Selected With Search Tool – **Print/Plant Lists/Plants Selected With Search Tool**

## **Plant List Formats Can Be Limited to Taxon Level Fields Only**

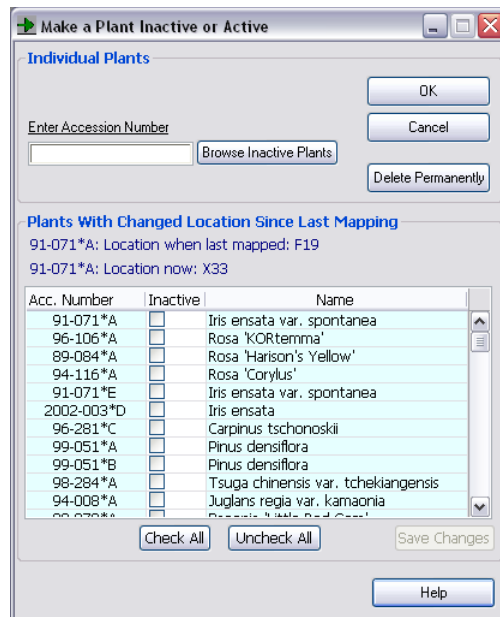
You can now limit Plant List Formats to include only fields containing data at the taxon level by including the word TAXON in the name of the format. For details, click **Tools/Create Plant List Formats** and click the Help button.

A special use for this feature is to create a format for the taxon level display in

[Web-VQF](#) by naming the format ECM\_TAXON\_DETAIL.

## Option to Automatically Make Plants with Changed Location Inactive

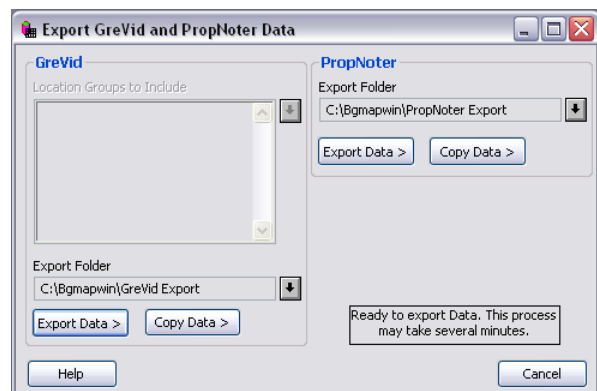
In the Make a Plant Inactive or Active window (click **Map/Make a Plant Inactive or Active**), plants whose *BG-BASE* locations have changed since they were last mapped are displayed. You can then select any or all of these plants and make them inactive.



The list shows all mapped plants whose location code was changed in *BG-BASE* since they were last mapped or remapped. This can be useful in identifying plants that need remapping in a situation where different staff members are responsible for database maintenance and mapping. To make one or more of these plants inactive or active, check the corresponding box, or simply click anywhere in the corresponding row. Or, click the "Check All" or Uncheck All" buttons. Then, click "Save Changes."

## [GreVid](#) and [PropNoter](#) Export Folders Can Be Set by User

You can now set where the data will be exported for uploading to mobile devices.



## Improvements to [Facilities Management Module](#)

- ❖ Added scrollbar to import form.
- ❖ Added Maintenance Priority Levels
- ❖ More Setup Options - Show on Map and Type of Media - Reduced number of clicks needed to assign images.
- ❖ Fixed handling of "REMOVED" field in searches
- ❖ Added "Close Record" button.
- ❖ Allow maintenance next due to be entered manually to override default by browsing.

## Improvements to [Web-VQF](#)

- ❖ It is now possible to select the fields and headings for the taxon level display – See “Plant List Formats Can Be Limited to Taxon Level Fields Only” above.
- ❖ Added more glossary words and illustrations.
- ❖ Glossary entries can now link to other glossary entries.
- ❖ Pins on the map in plant search results now link to the taxon level instead of the plant level.
- ❖ Different descriptions for the same plant can be entered for different tours. For details, see “Adding Individual Item Descriptions” in the help screen for Canned Tours.
- ❖ When searching for plants in a garden area, the map shows only plants in the searched area instead of plants that may be located anywhere.
- ❖ New [Web-VQF API](#) allows you to retrieve information on plants and canned tours in the form of XML files that can be used to provide data to other software applications.

## Bug Fixes, etc.

As usual, the update contains numbers subtle improvements and bug fixes.