

BG-Map TechNote

Setting up BG-Map Web-VQF for Mobile Devices

Introduction

About Mobile Device Support

Web-VQF now provides support for mobile web-enabled devices, such as iPhone and Android. It can automatically detect mobile devices and format its display accordingly to make the display more readable and easy to navigate. This document explains how to set up your Web-VQF installation for mobile device support.

BG-Map Version 2011a Required

Mobile device support requires BG-Map Version 2011a or later.

Limitations of Mobile Device Support

The following features of Web-VQF do not offer mobile device support:

- ❖ Staff Mode
- ❖ ECM Courses and Course Plants
- ❖ Create Your Own Tour

Maps

Maps are viewable on mobile devices, but currently, the maps are not clickable. They can be panned and zoomed by using finger gestures. Additional support for mobile devices is currently being developed at OpenLayers (the developers of the map interface) and will be incorporated into Web-VQF as soon as available. For more information, go to: <http://www.openlayers.org/>

Creating a Mobile Home Page and Landing Pages

Naming the Pages

Your mobile home page should be located in the same directory as the main home page. The main home page should be named ECM_Home.html, and the mobile



A mobile home page

home page should be named **ECM_HomeMobile1.html**.

The individual landing pages for “Find a Plant”, “Find a Garden Feature”, etc. should have the same names as the non-mobile pages with an added “Mobile1.” For example, if the “Find a Plant” page is named FindPlant.html, the corresponding mobile page should be named **FindPlantMobile1.html**.

Designing the Pages

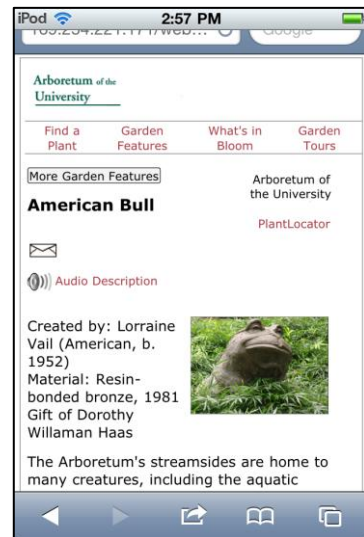
There are numerous guides available, for designing mobile pages. In general, the pages should be designed along a vertical format. Graphics and text should be large enough to read on these devices. Refer to the Technical Reference section of the Web-VQF/ECM Users Manual for additional details.

“What is This Plant” and “Recently Viewed”

Do not include these features on your mobile pages.

Navigation Bars

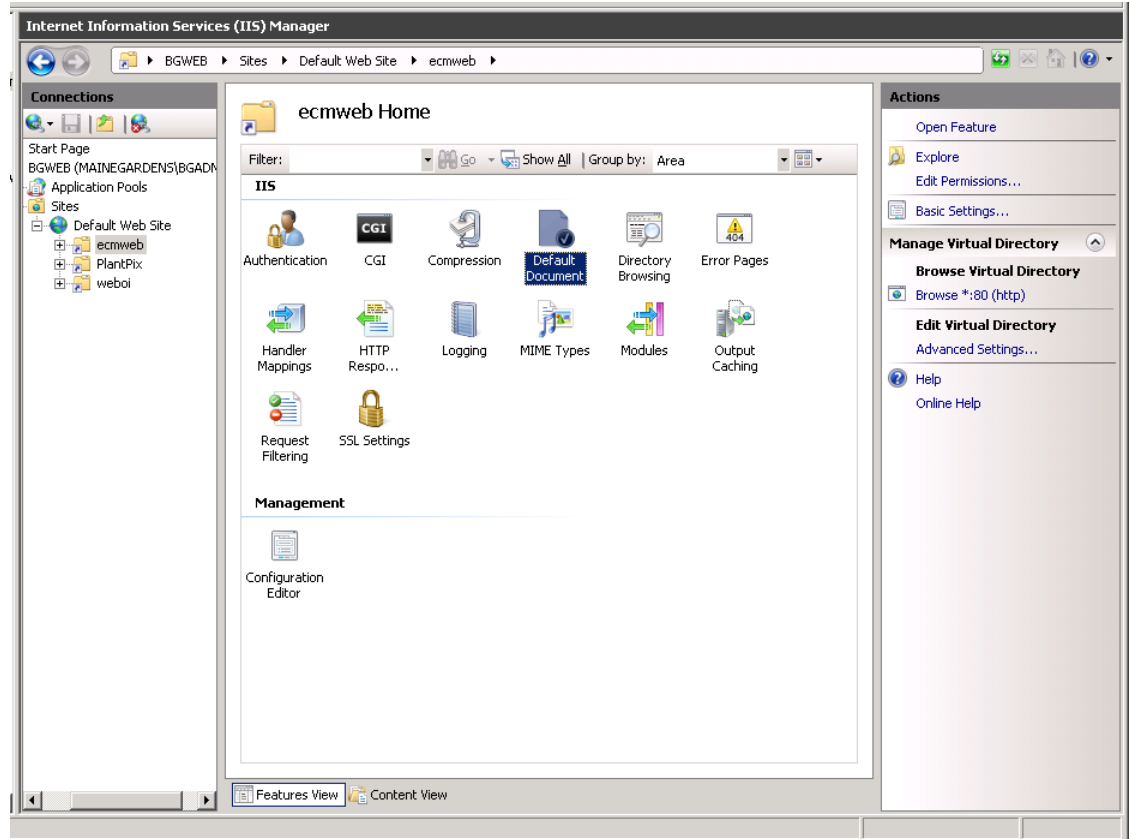
Create separate source files for the top and bottom navigation bars, if you use them. The files should have the same names as the normal navigation bars, followed by “Mobile1.” For example, if your top navigation bar source file is Navbar.html and your footer navigation bar source file is named Footbar.html, the mobile versions should be named **NavbarMobile1.html** and **FootbarMobile1.html**. Use formatting suitable for mobile devices when creating these bars.



A navigation bar

Automatically Directing Mobile Browsers to Your Mobile Content

Configuring a Default Document on Your Web Server

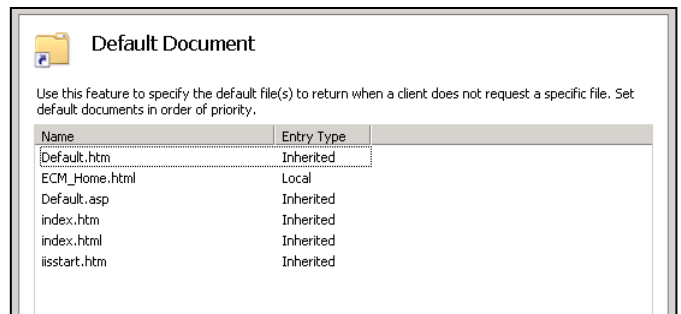


The following pertains to Internet Information Service (IIS), but similar settings can be found on Apache or other web servers.

In the Default Website, go to the ecmweb folder and select “Default Document.”

Set the file Default.htm at the top of the list, followed by ECM_Home.html.

Create a page named **Default.htm** in the ecmweb folder. This page will direct visitors to either the normal or mobile home page as needed.



The html coding for this page should be similar to the following:

```
<!DOCTYPE html PUBLIC "-//WAPFORUM//DTD XHTML Mobile
1.2//EN" "http://www.openmobilealliance.org/tech/DTD/xhtml-
mobile12.dtd">
<html>
<head>
<meta name="Generator" content="BG-Map" />
<meta http-equiv="Refresh" content="0;
url=../../weboi/oecgi2.exe/INET_ECM_SET_HOME PAGE" />
<link rel="shortcut icon" href="./Bitmaps/favicon.bmp" />
<title>Web-VQF/ECM</title>
<link href="./css/ECM_global_styles.css" type="text/css"
rel="stylesheet">
</head>
<body class="plain">
<div style="margin:5%;">

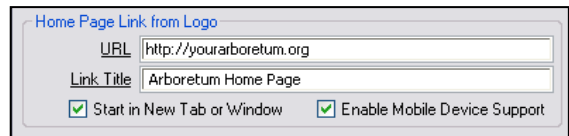

<h1>PlantLocator</h1>
<h3>One moment...</h3>

</div></body></html>
```

Links to your Web-VQF site should direct visitors to the ecmweb folder. The above default document will then direct them to the correct home page.

Enabling Mobile Device Support

In the Web-VQF setup window, go to the “Admin” tab. Check the box labeled “Enable Mobile Device Support” and save. Make certain that you have completed the above steps before doing this.



Adding Audio and Video Content for Garden Features and Canned Tours

It is now possible to easily add audio and video content that can be accessed by mobile devices and desktop computers. See the help screens in the Garden Features and Canned Tours setup windows for details. For additional information, see: http://www.bg-map.com/userdata/ECM_AudioVideo.pdf

BG-Map Botanical Garden Mapping System
Mapping the world... one plant at a time

For up to date information, visit the BG-Map Users Support Website at www.bg-map.com/userdata
© 2011 Glicksman Associates, Inc.