

## BG-Map TechNote

# How to Export Web-VQF Map Tileset Data for Remote Re-Tiling

Updated 10/1/20

**This document describes a procedure for exporting data so that a Web-VQF map can be retiled at a remote location.**

There may be circumstances in which you may not be able to re-tiling a map locally. This may be because you are using CMS IntelliCAD, which does not support re-tiling, instead of AutoCAD. Or you may be using AutoCAD but do not want to tie up a workstation or a user license for the lengthy process of re-tiling. This TechNote explains how you can generate a set of data locally and send it to BG-Map Tech Support in the form of a zip file. A zip file with the complete Tileset will be returned to you for installation on your server.

Note, there is a charge for this service. For details, refer to the [BG-Map price list](#).

### Before Starting, Install 7-Zip

7-Zip is a utility for creating compressed zip files. To download and install it, go to <https://www.7-zip.org/>

The screenshot shows the 'Map Tile Generation' dialog box. Red circles and lines highlight specific areas: 'Segment the Script' checkbox, 'Create New Tile Script' button, 'Export Tile Set for Remote Retiling' checkbox, 'Export Tile Set' button, and the 'Layers to Turn Off' list. The 'Layers to Turn Off' list includes: PLANTS,CANOPIES\*, CANOPIES\_FILL\_PLANTS, LABELS\_1, LABELS\_2, LABELS\_2, LABELS\_3, LABELS\_3, LABELS\_4, LABELS\_4, \*PLANTS, and UTIL,GRIDNO,UNACPL,GRID. The 'Geolocation Parameters' section shows Latitude of Center of Site: 40.425563888, Map Units per Deg. of Long.: 278415.9545, and Map Units per Deg. of Lat.: 364312.8998. The 'Reference Points' table has 2 rows.

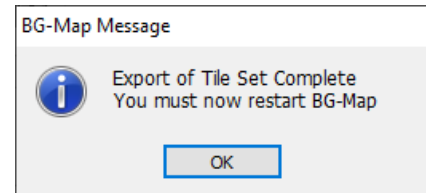
	Map X	Map Y	Lat.
1	2996313.43	1884203.53	40.4
2	2999285.06	1888993.46	40.4344

### Exporting the Tileset Data – Visitors Map

- Open the map that you wish to use. Then click “File/Reinitialize BG-Map functions.”
- In Web-VQF/ECM Settings go to Map – Visitors

- If you have not exported a tile set previously, set the layers you wish to turn on and off at various zoom levels by using the table. Then click “Create New Tile Script.”
- When the tile script is complete, check “Export Tile Set for remote retiling and click Export Tile Set.”

The export process can be lengthy. Wait until you see a “completed” message. If you are using CMS IntelliCAD, you will need to restart BG-Map.



The exported data will appear in this folder on the C: drive:

**C:\Bgmapwin\ECM\Tileset\_Exported\_ZipFiles\XYZTileset.zip**, where XYZ represents your 3 letter BG-Map user ID code.

Send the zip file to BG-Map Users Support for processing. A complete tile set will be returned to you for installation on your server.

#### Exporting the Tile Set Data – Staff Map

If you have a separate Staff Map.

- Open the Staff Map.
- Reinitialize BG-Map functions
- In Web-VQF/ECM Settings go to Map – Staff

The remainder of the process is the same as for the Visitors Map.

**BG-Map** Botanical Garden Mapping System

Mapping the world... one plant at a time

For up to date information, visit the BG-Map Users Support Website at [www.bg-map.com/userdata](http://www.bg-map.com/userdata)

© 2020 Glicksman Associates, Inc.